

Tuesday 16th September

**22 A Community Walk In Stonehouse**  
**Walking Your Way To Health**

Meet Stonehouse Community Centre, Laburnum Walk  
See *Tuesday 9th* for details.

**23 A Community Walk in Nailsworth**  
**Walking Your Way To Health**

Meet Nailsworth Library, Old Market  
See *Tuesday 9th* for details.

**24 Heavens, Horns & WASA WASA**  
**South Cotswold Group - Ramblers Association**

Meet The lay-by on A419 just before the Pavillion  
Restaurant in Brimscombe 10am (S0877 022) • 3.5 hours  
• 5.5 miles • Hilly – walking boots recommended • Dogs  
yes but stiles gates/on lead near livestock • Call Bernard  
Smith **01453 884013** • **FREE**

**25 Walks for Well-Being – To the**  
**Tyndale Monument**

**Scout Enterprises**

Meet Chipping Car Park, Wotton-under-Edge 11am • 45  
mins one way • 1.5 hours return • Dogs yes • Toilets at  
Wotton-under-Edge • To guarantee a **FREE** place call  
Jem, Fiona or Sarah **01453 751049** Email:  
[jemsweet@scout-enterprises.co.uk](mailto:jemsweet@scout-enterprises.co.uk)

Wednesday 17th September

**26 A Community Walk in Cainscross**  
**Walking Your Way To Health**

Meet Ebley Mill, Cainscross  
See *Wednesday 10th* for details.

**27 A Community Walk in Stroud**  
**Walking Your Way To Health**

Meet Tesco car park  
See *Wednesday 10th* for details.

Thursday 18th September

**28 Walk into the picture**  
**Stroudwater Textile Trust**

Meet Bell Hotel, Cheapside at 10.30am • 2.5 hours  
• Strong walking shoes recommended. Hill to climb.  
• No dogs/pushchairs • Call Ian Mackintosh  
**01453 766273**. £1 donation on the day.

The Festival is part of Stroud Town Council's effort to  
improve local footpaths and encourage people to  
enjoy their local amenities.

Designed, illustrated and produced by Steve Roberts:  
'The Big Classroom' Tel: **01453 753123**.

**29 A Community Walk in Dursley**  
**Walking Your Way To Health**

Meet Dursley Swimming Pool at 2.30pm • 30–45 mins  
• No dogs/wheelchairs • Book your place John Little  
**0784 2201243** Email: [John.little@stroud.gov.uk](mailto:John.little@stroud.gov.uk)

Friday 19th September

**30 Tea with the Queen**  
**Stroud Community Land Trust**

Meet outside Star Anise Cafe, bottom of Gloucester  
Street, Stroud. 10.30am • 8 miles • 4 hours plus tea  
break • Mainly pasture, woodland, several hills, can be  
muddy in places. Good walking boots required. • Dogs  
under control only • Booking required. **FREE** • Call Andy  
or Debbie **01453 756955** Mobile: **07901 702246** on  
day of walk only

Saturday 20th September

**31 Up to Coaley Peak**  
**South Cotswold Group – Ramblers Association**

Meet Leonard Stanley Church 10am (S0802 033)  
• 3.5 hours • 5.5 miles • Moderate, hilly (one steep  
climb to begin) • Walking boots recommended • Dogs  
yes but stiles gates/on lead near livestock • Call Bernard  
Smith **01453 884013** • **FREE**

**32 Railway, River, Canal and Footpath**  
**Stroud Community Land Trust**

Meet Stroud Railway Station 10.20am • 6 hours  
• 12 miles • Flat, mainly canal towpath, some woodland  
and fields • Dogs welcome – not allowed inside pub  
• Booking essential. Max 16 places. • Call Andy or  
Debbie **01453 756955**. Mobile: **07901 702246** on  
day of walk only • **FREE**. You need to buy train ticket on  
the day or in advance approx £4.50.

Sunday 21th September

**33 Eco-Homes Open Day - Rodborough**  
**Stroud District Council – Transition Stroud**

Meet outside Waitrose, London Rd 10am. Free SDC car  
park nearby • 6.5 hours • 4 miles • Steep • Not suitable  
for dogs and small children • By ticket only, £5 - bought  
from Stroud Tourist office before Friday 19th September.  
Max 15 places • Lunch not included. Pub lunch or bring a  
packed lunch. • Call Debbie Hewitt **01453 754464**

Sunday 28th September

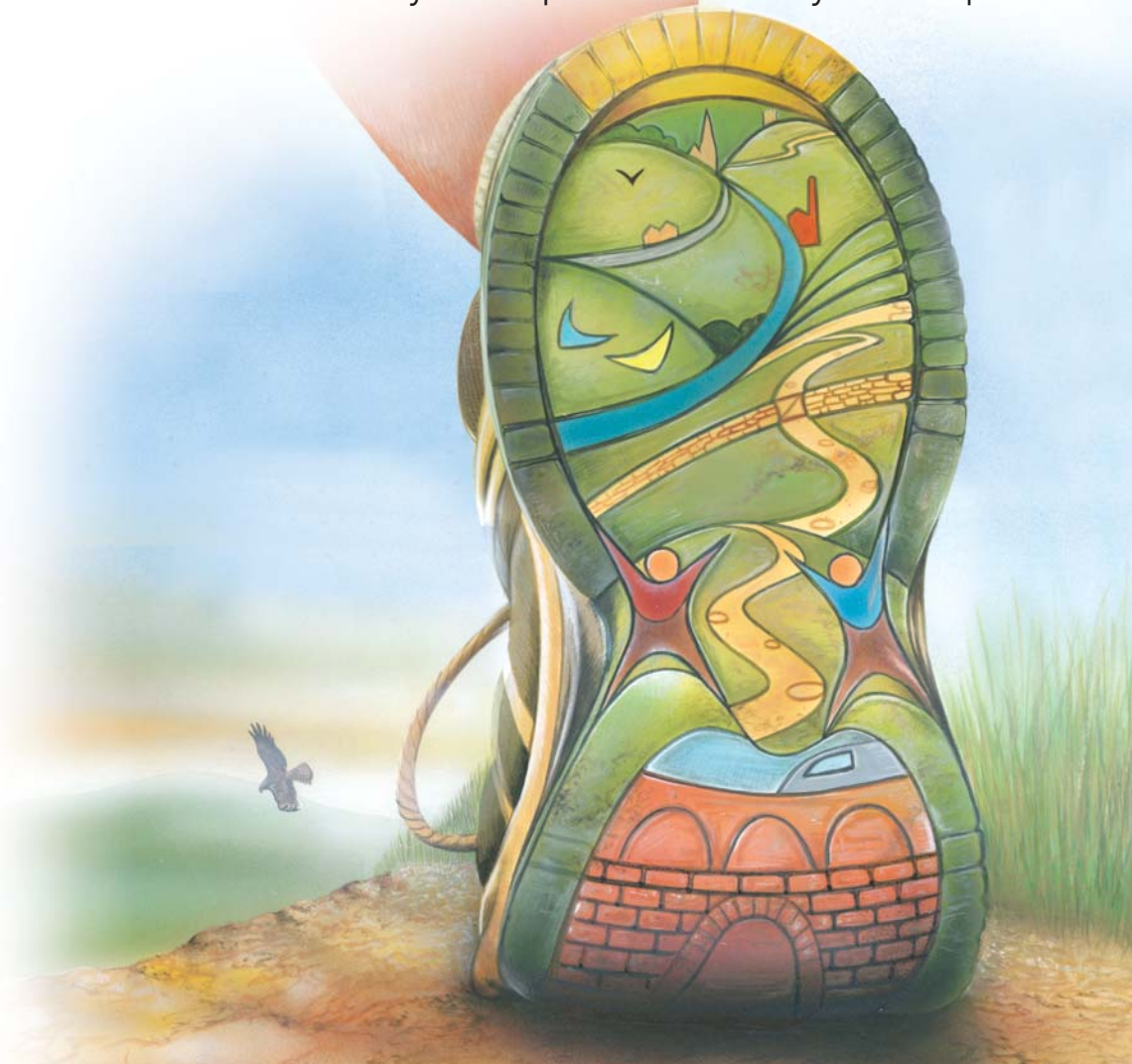
**34 The Five Valleys Walk**  
**National Meningitis Trust**

21st anniversary of our 21-mile sponsored walk  
• 11 manageable sections • Start and finish at any check  
points • For prices etc register at: [www.meningitis-trust.org](http://www.meningitis-trust.org)  
or ring **01453 769080** for a pack.



# Stroud Walking Festival 2008

Friday 5th September – Sunday 28th September



For your **FREE** detailed festival brochure call  
**01453 762817** or visit [www.stroudtown.gov.uk](http://www.stroudtown.gov.uk)  
or [www.strollinginstrouddistrict.org](http://www.strollinginstrouddistrict.org)

The Stroud Walking Festival 2008 returns for its second year in September. Building on the success of last year, everything about the Festival is bigger. The number of organized walks has almost tripled in number, with 33 planned walks. The area covered by the walks has widened to include places such as Kemble, Frampton and Dursley. The Festival will last for two weeks this year, not one and it will culminate in the Meningitis Trust Five Valleys Walk.

This leaflet provides a summary of all the walks on offer. A larger and more detailed brochure is available, free of charge, from the Town Council or from our website (details at bottom of page). More information on individual events are available from the people leading the walks. Contact details are included with each walk, should you wish to do so.

#### Friday 5th September

### 1 Cotswold Commons and Beechwoods Natural England

Meet 10am • 9 miles • 6 hours • Uneven ground, number of stiles, steep hills, mud in some parts. Walking boots recommended • Dogs must be well-behaved and kept under control • Max 14 places. Booking essential. **FREE** • Call Kate Gamez **01452 813630**  
Email: [kate.gamez@naturalengland.org.uk](mailto:kate.gamez@naturalengland.org.uk)  
Mobile: **07747 485136**

#### Saturday 6th September

### 2 Beating the Bounds Stroud Town Council

Meet Uplands Playing Field Car Park 10am • 10 miles • 6 hours with lunch break • Very hilly. Walking boots essential • Not suitable for pushchairs • Dogs welcome, may need lift over stiles • Booking required • Call Andy or Debbie **01453 756955** • Max 17 places. Tickets £2.50 in advance from Stroud Tourist Info' Centre, Sub Rooms.

#### Sunday 7th September

### 3 Woodchester Wildfood Walk National Trust

Meet NT Car Park, Woodchester Park at 10am • 3 hours • 3 miles • Gentle walk, slightly rough ground. Suitable for families, not suitable for pushchairs • No dogs • Booking required. **FREE** • Call Rob Palmer **01452 814213**



### 4 Ice Cream and Views Stroud Valleys Project

Meet Waitrose Car Park 10am–1pm • 6km • 3 hours • Canal towpath, public footpaths, country lanes, few stiles, muddy and hilly in places. • Not suitable for pushchairs/wheelchairs • Suitable for families not young children • Dogs on leads • **FREE** – donations welcome. Bring money for ice cream. • Call Ivi Szaboova on **01453 753358**. Email: [ivi@stroudvalleysproject.org](mailto:ivi@stroudvalleysproject.org). Mobile: **07876 050878** *morning of walk only*

### 5 A Walk in the Park Museum In The Park

Meet Museum Courtyard at 2pm • 1 hour • Easy, pathways, gentle slopes • Dogs on a lead • Suitable for pushchairs • Advance booking necessary **01453 763394. FREE.**

#### Tuesday 9th September

### 6 A Community Walk in Stonehouse Walking Your Way To Health

Meet Stonehouse Community Centre, Laburnum Walk at 10.30am • 30–45 mins • No dogs/wheelchairs • Call John Little **0784 2201243** Email: [John.little@stroud.gov.uk](mailto:John.little@stroud.gov.uk)

### 7 A Community Walk in Nailsworth Walking Your Way To Health

Meet Stonehouse Nailsworth Library, Old Market at 2.30pm • 30–45 mins • No dogs/wheelchairs • Call John Little **0784 2201243** Email: [John.little@stroud.gov.uk](mailto:John.little@stroud.gov.uk)

### 8 Walks for Well-Being Scout Enterprises

Meet entrance to Waitrose, London Road, Stroud 11am • 45 minutes one way/1.5 hours return • May be uneven in parts and narrow. Set of steps. Not a circular walk, lifts back to Stroud available if people do not wish to walk the return leg. Destination Chalford, with opportunity to walk on to Frampton Mansell/Sapperton if sufficient interest on the day. • Dogs allowed • Toilets at Waitrose and Chalford • Call Jem, Fiona or Sarah **01453 751049** Email: [jemsweet@scout-enterprises.co.uk](mailto:jemsweet@scout-enterprises.co.uk) • **FREE**

#### Wednesday 10th September

### 9 A Community Walk in Cainscross Walking Your Way To Health

Meet Ebley Mill, Cainscross at 12.30pm • 30 mins • Short walk in and around Cainscross with the Walk Your Way To Health programme. Open to all. If weather good, may include a field. • Flat, comfortable footwear. • No dogs/wheelchairs • Call: John Little **0784 2201243** Email: [John.little@stroud.gov.uk](mailto:John.little@stroud.gov.uk) • **FREE**

### 10 A Community Walk in Stroud Walking Your Way To Health

Meet Tesco car park, Stratford Road, Stroud at 2.30pm • 30–45 mins • Tarmac paths and canal towpath. If weather good, may include a field. • Flat comfortable footwear recommended • No dogs/wheelchairs • Call John Little **0784 2201243** Email: [John.little@stroud.gov.uk](mailto:John.little@stroud.gov.uk)

### 11 A Midweek Miserden Marathon Stroud Community Land Trust

Meet Uplands Playing Field car park, Stroud 9am • 18 miles • 9 hours plus several stops • Several steep hills and muddy tracks • No Dogs • Booking required • Call Andy or Debbie **01453 756955** • Max 12 places. Tickets £2.50 in advance from Stroud Tourist Info' Centre, Sub Rooms.

#### Thursday 11th September

### 12 A Countryside Walk around Painswick South Cotswold Group – Ramblers Association

Meet Walkers car park off B4073. Map L162/E179 (SO 867 104) at 10am • 3.5 hours • 5.5 miles • Moderate, hilly (walking boots recommended) • Dogs allowed but stiles gates/on lead near livestock • Call Bernard Smith **01453 884013** • **FREE**

### 13 A Walk In The Park – For Schools Museum In The Park

PLEASE CONTACT THE MUSEUM FOR DETAILS  
*See September 7 for details – this walk is for schools only. Need to have staff/parents to accompany students.*

### 14 A Community Walk in Dursley Walking Your Way To Health

Meet Dursley Swimming Pool at 2.30pm • 30–45 mins • No dogs/wheelchairs • Call John Little **0784 2201243** Email: [John.little@stroud.gov.uk](mailto:John.little@stroud.gov.uk) • **FREE**

### 15 Historic landmarks around Woodchester Gloucestershire County Council Archaeology Service

Meet, porch of St Mary's Church, North Woodchester (SO8395902663) 10am • 3 hours • Some short steep sections. Stout footwear • No dogs • Call David Bull **01452 425688** Email: [david.bull@gloucestershire.gov.uk](mailto:david.bull@gloucestershire.gov.uk)

#### Friday 12th September

### 16 Uley Bury and Downham Hill Natural England

Two walks at 10.30am and 2pm • Meet at layby adjacent to Uley Bury on B4066. Parking spaces are limited, please share cars where possible. • 2.5 miles • 1.5 hours • Steep in places, stout boots advised. A stick may be useful! • No push/wheelchairs • Dogs welcome - must be well-behaved and kept under close control. • **FREE** - please contact Ann Harris **0773 3003489** E-mail: [ann.x.harris@naturalengland.org.uk](mailto:ann.x.harris@naturalengland.org.uk)

### 17 A Ruskin Mill Ramble

#### Walks for Well-Being - Scout Enterprises

Meet Ruskin Mill at 11am • Car parking at Nailsworth Town Hall, or by arrangement with Ruskin Mill. • 30 mins each way/1 hour in total • Dogs yes • Toilets at Ruskin Mill • Call Jem, Fiona, Sarah **01453 751049** Email: [jemsweet@scout-enterprises.co.uk](mailto:jemsweet@scout-enterprises.co.uk) • **FREE**

#### Saturday 13th September

### 18 Open Eco-Homes - Uplands & Bowbridge Stroud District Council/Transition Stroud

Meet 10am Bisley Old Road allotments • 3 miles • 6 hours • Not suitable for dogs and small children • By ticket only. Cost £5 to be bought from Stroud Tourist office before Friday 12th September. • Max 15 places • Lunch not included in price. Bring a packed lunch if you prefer. • Call Debbie Hewitt **01453 754464**

#### Sunday 14th September

### 19 South Cotswold Group – Ramblers Association

#### Lakes, fields and the River Frome

Meet Fromebridge Mill Pub off the A38 at Whitminster (Map L162/EOL14 (769073) at 10am • 3.5 hours • 6 miles • Level, but walking boots recommended • Dogs yes but stiles gates/on lead near livestock • Call Bernard Smith **01453 884013** • **FREE**

### 20 Exploring Stroud's Green Spaces Stroud Town Council

Meet Stroud Cemetery Bisley Old Road 1pm • 2.5 miles • Finish Sub Rooms forecourt 3pm • No dogs • Footpath and grass. Mainly downhill slopes • Booking required • £1.50 per ticket (charitable donation) from Stroud Tourist Info' Office • Call Andy Read **01453 756955**

### 21 Walking the Severn Way Walking the Land (Artist led group)

Meet The Old Passage Inn, Arlingham 10am • 4 miles • 3 hours • Flat, quite even, suitable for all-terrain buggies not wheelchairs • No dogs • Book in advance on **01453 756064**. Cost £12 p/p.